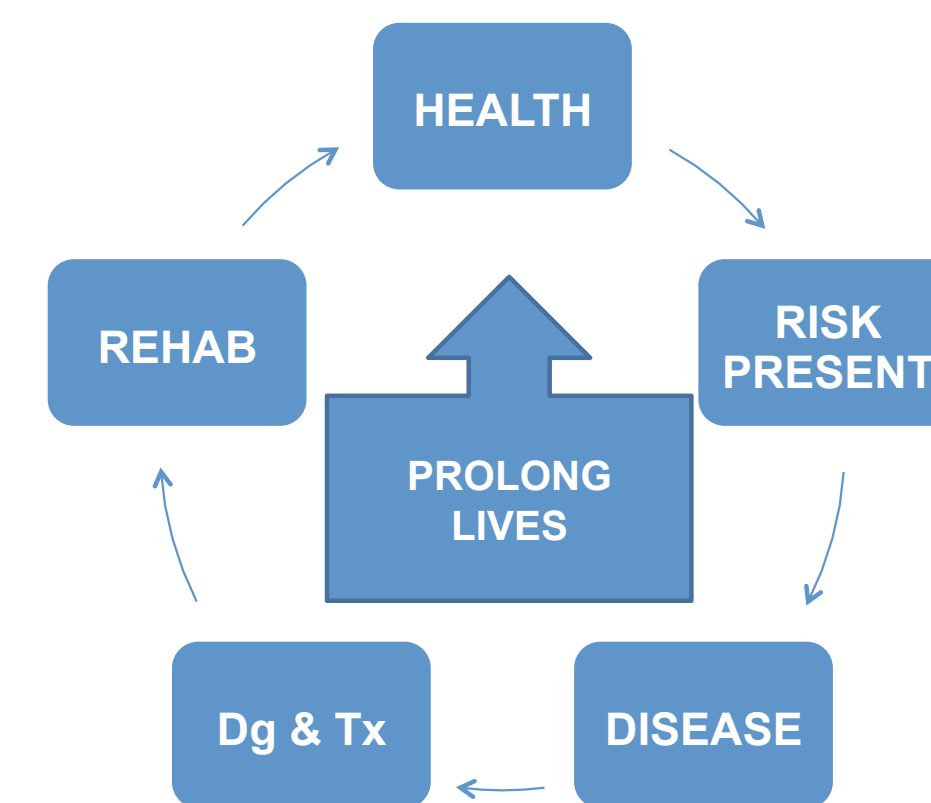


INFORMATION TECHNOLOGY EMPOWERING POINTS-OF-CARE

BIOSCICON, INC
2016

MEETING THE GOALS



10/26/2016

BIOSCICON, INC. (C) 2016

2

MEDICINE IN OUR LIVES

PAST

- HELP INDIVIDUALS
- PROTECT OTHERS
- FAMILY DOCTOR
- MICROENVIRONMENTAL SURVEILLANCE

PRESENT

- POINTS-OF-CARE
- Recruitment/registration
- Informed consent
- Exam
- Specimen Collection
- Digital imaging

10/26/2016

BIOSCICON, INC. (C) 2016

3

FUTURE

GLOBAL NETWORKING

- TELEMEDICINE: BRIDGE TO EQUALISATION
- STANDARD: HEALTH NEEDS, NOT ONLY HEALTHCARE DEMANDS
- MEASURED: ROBUST CLINICAL PARAMETERS: INCIDENCE, PREVALENCE AND MORTALITY

REVERSE DISEASE TRENDS

- MODEL: CERVICAL CANCER
- Pap test has made impact in the US only after the outreach of women at risk went beyond 50%
- More that 90% were Pap test negative, but 7% Pap positive helped doctors to reduce the cervical cancer mortality for 80% - the best anticancer prevention

10/26/2016

BIOSCICON, INC. (C) 2016

4

GLOBAL NETWORKING



10/26/2016

BIOSCICON, INC. (C) 2016

5

WOMEN OF ALL COLORS UNITE



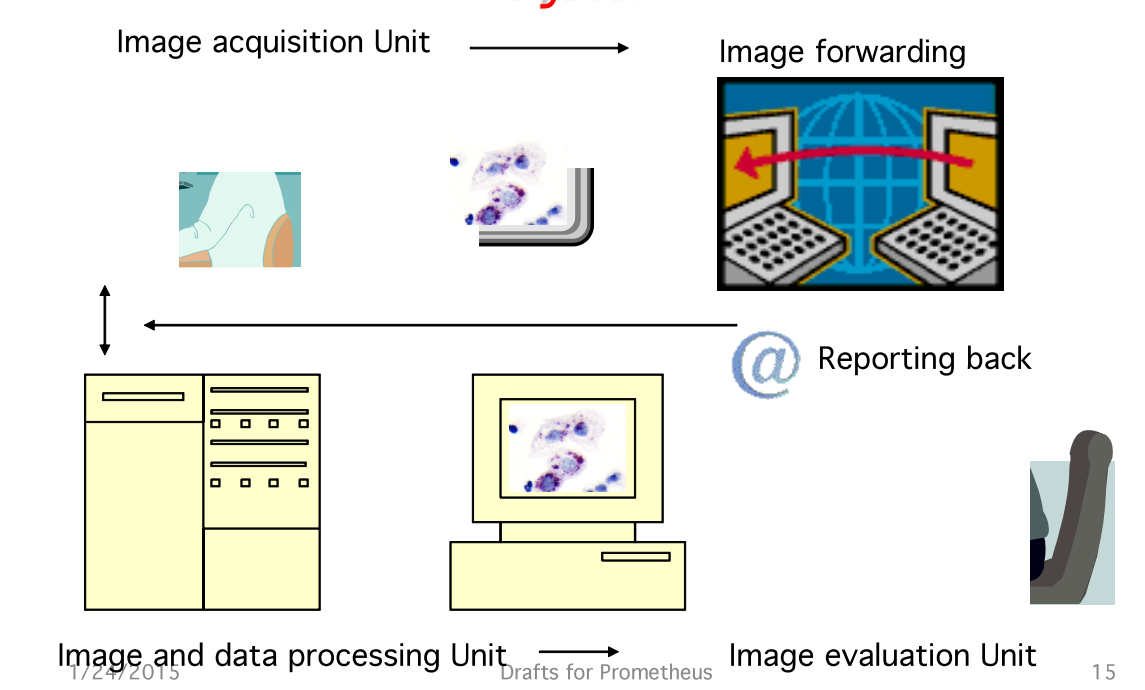
10/26/2016

BIOSCICON, INC. (C) 2016

6

NEW TOOLS; TELEMEDICINE PROTOCOL FOR SERVICE DELIVERY

MarkPap Digital Telecytology System



10/26/2016

BIOSCICON, INC. (C) 2016

7

NEW TOOLS: DIGITAL WORKSTATION

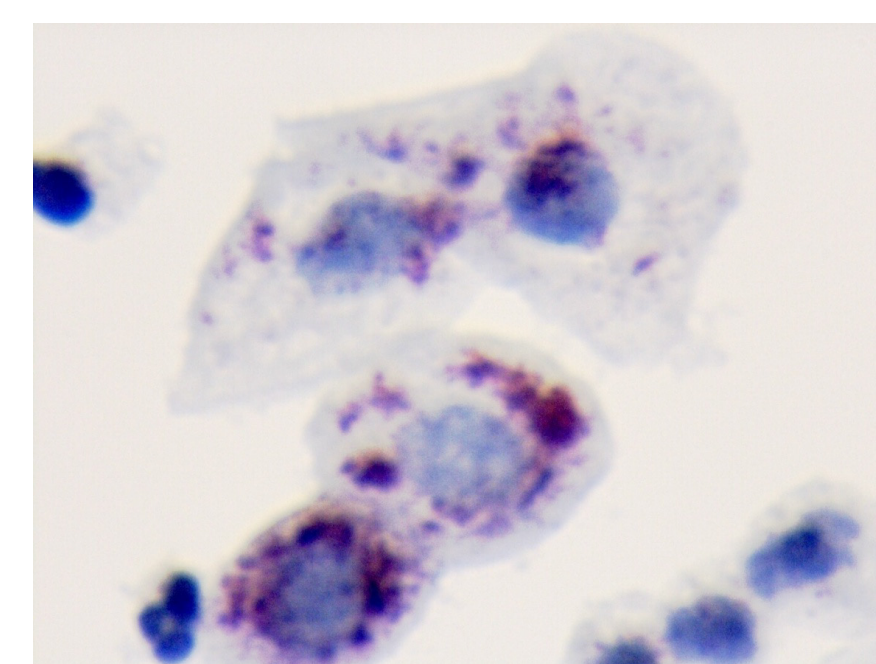


10/26/2016

BIOSCICON, INC. (C) 2016

8

MULTIPLE BIOMARKERS



10/26/2016

BIOSCICON, INC. (C) 2016

9

DIGITAL IMAGING PRINCIPLES

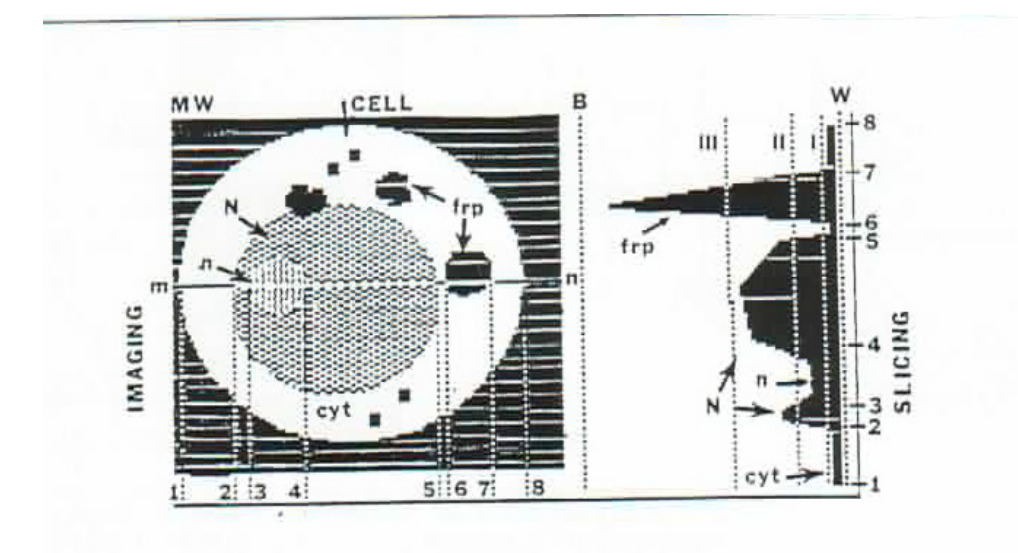


Figure 5: Cell image tomography and Imagescan. Segmentation of a cell image using two curves for cervical smearing. a. Imaging. Cell image digitized within 100 x 100 pixels frame. N = nucleus; cyt = cytoplasm; n = nucleolus; tp = four section product; (m - tp) = scan line; (1 - 8) segments of cell image separated by slicing. b. Slicing. H = "black" cancer; W = "white" cancer; LHLH = positions from which "white" cancer slices cell image; I = cytoplasmic density; II = selection of nucleolus; III = selection of HP and cell domains.

10/26/2016

BIOSCICON, INC. (C) 2016

10

NEW COLLECTION DEVICES



10/26/2016

BIOSCICON, INC. (C) 2016

11

SERVICE EVOLUTION

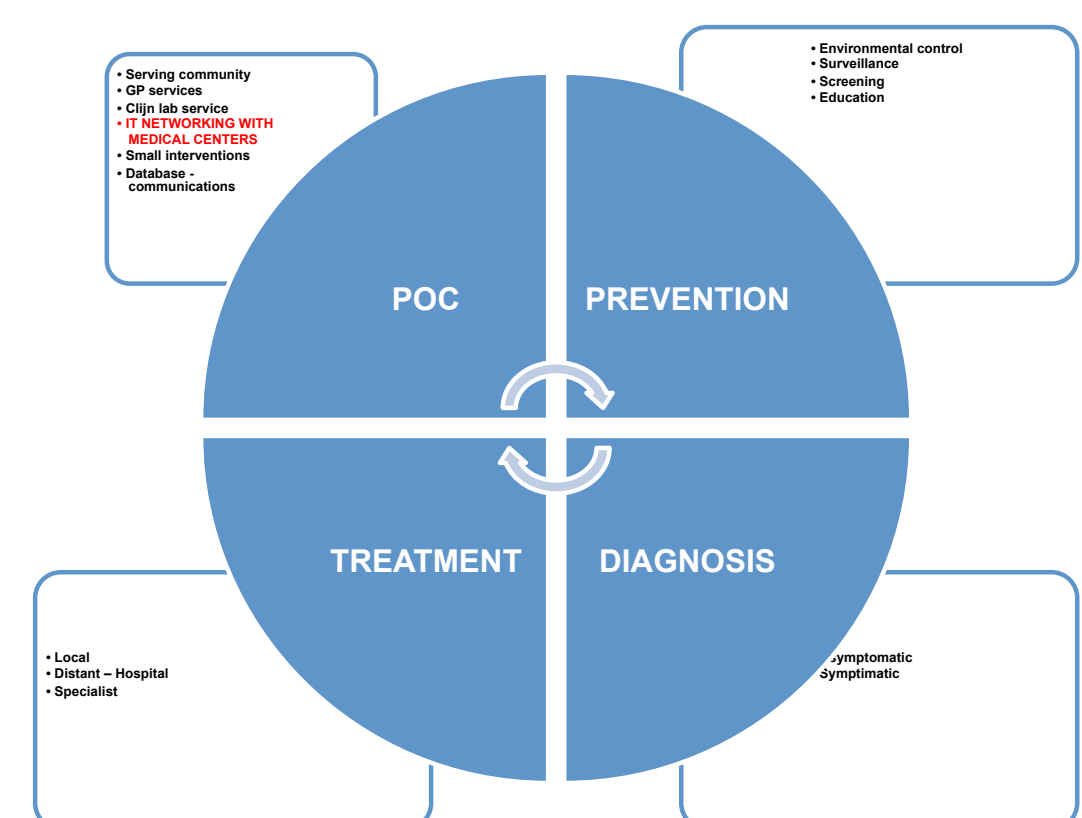
- PAST
 - Healthcare providers
 - Doctor's office - referrals
- PRESENT
 - POC
 - MEDICAL CENTERS
- FUTURE
 - NETWORKING
 - GLOBAL HEALTH

10/26/2016

BIOSCICON, INC. (C) 2016

12

POINTS-OF-CARE

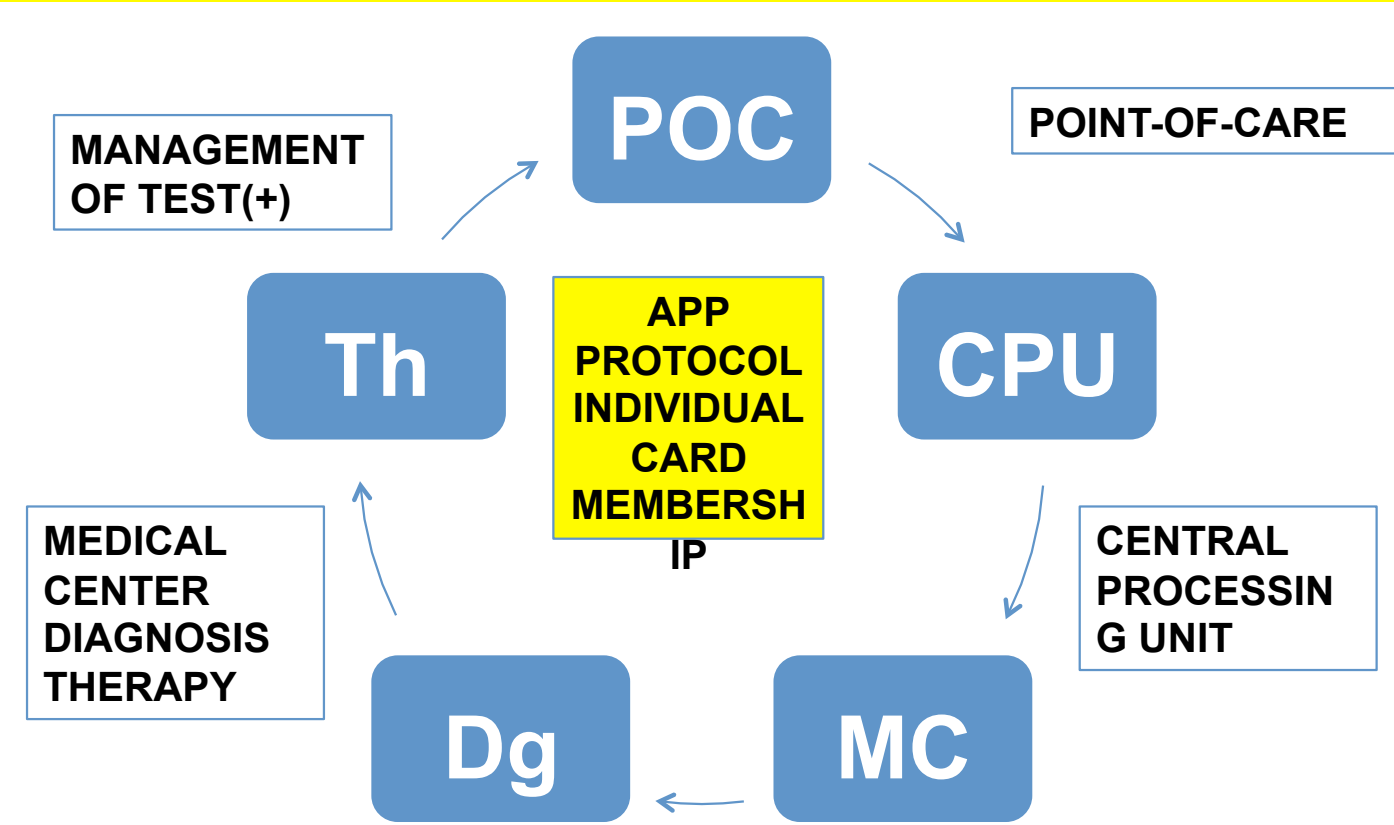


10/26/2016

BIOSCICON, INC. (C) 2016

13

NETWORK MANAGEMENT OF A CASE



10/26/2016

BIOSCICON, INC. (C) 2016

14

IMAGE ACQUISITION UNIT

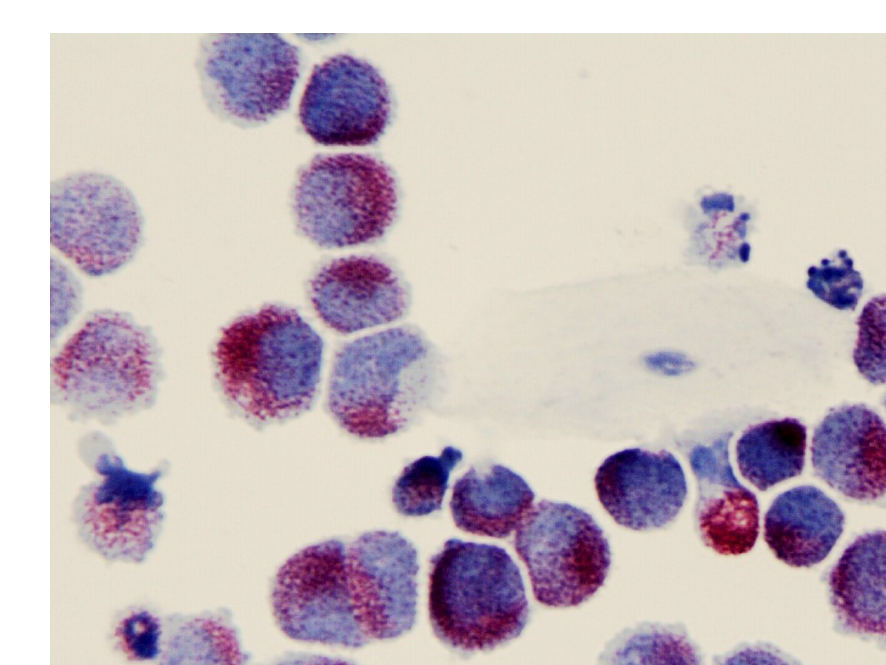


10/26/2016

BIOSCICON, INC. (C) 2016

15

BIOMARKER CONTROL SLIDE

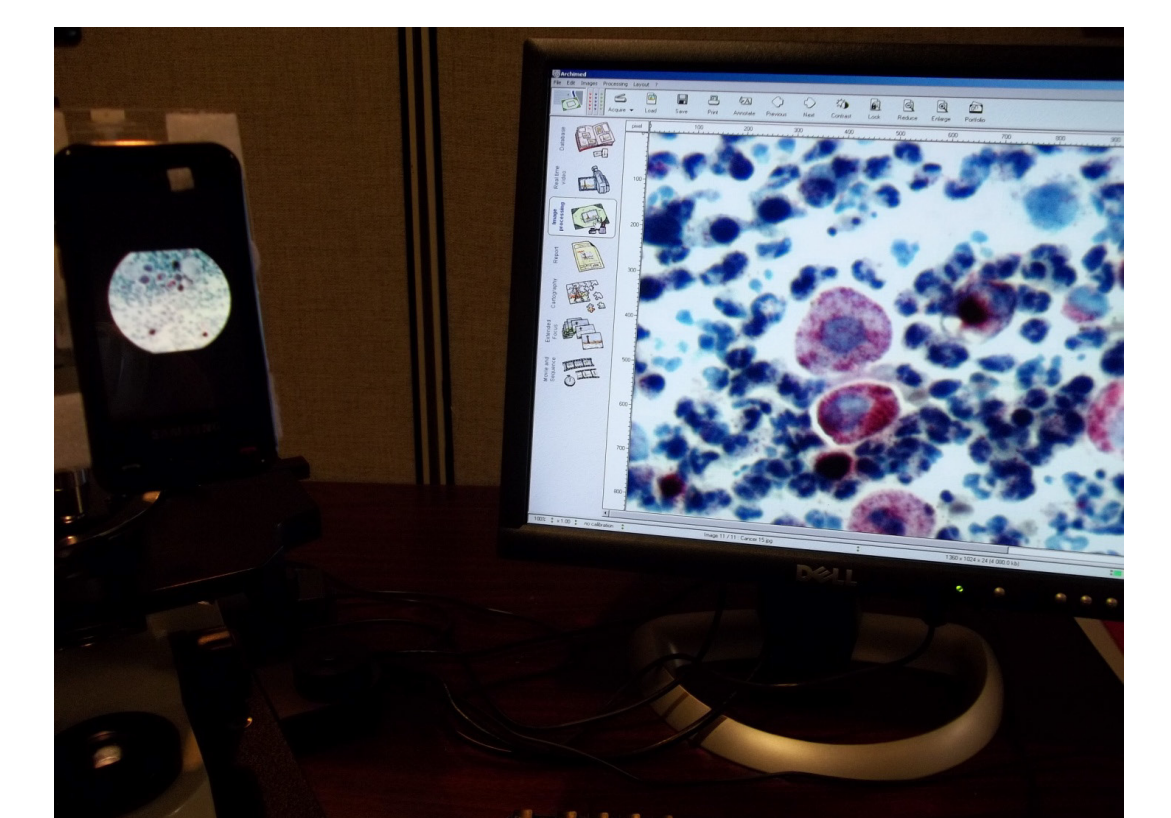


10/26/2016

BIOSCICON, INC. (C) 2016

16

IMAGE EVALUATION UNIT

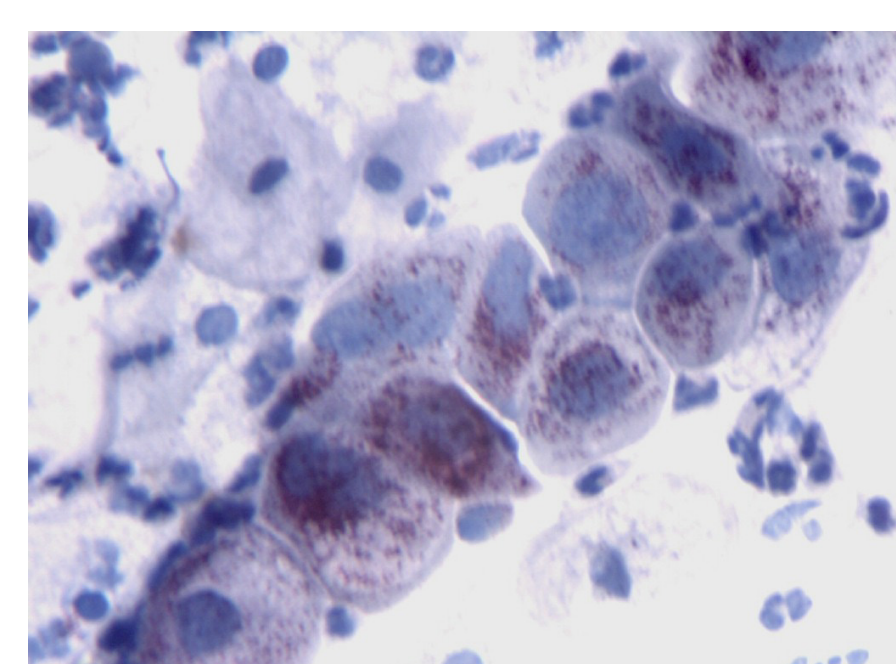


10/26/2016

BIOSCICON, INC. (C) 2016

17

CERVICAL CANCER

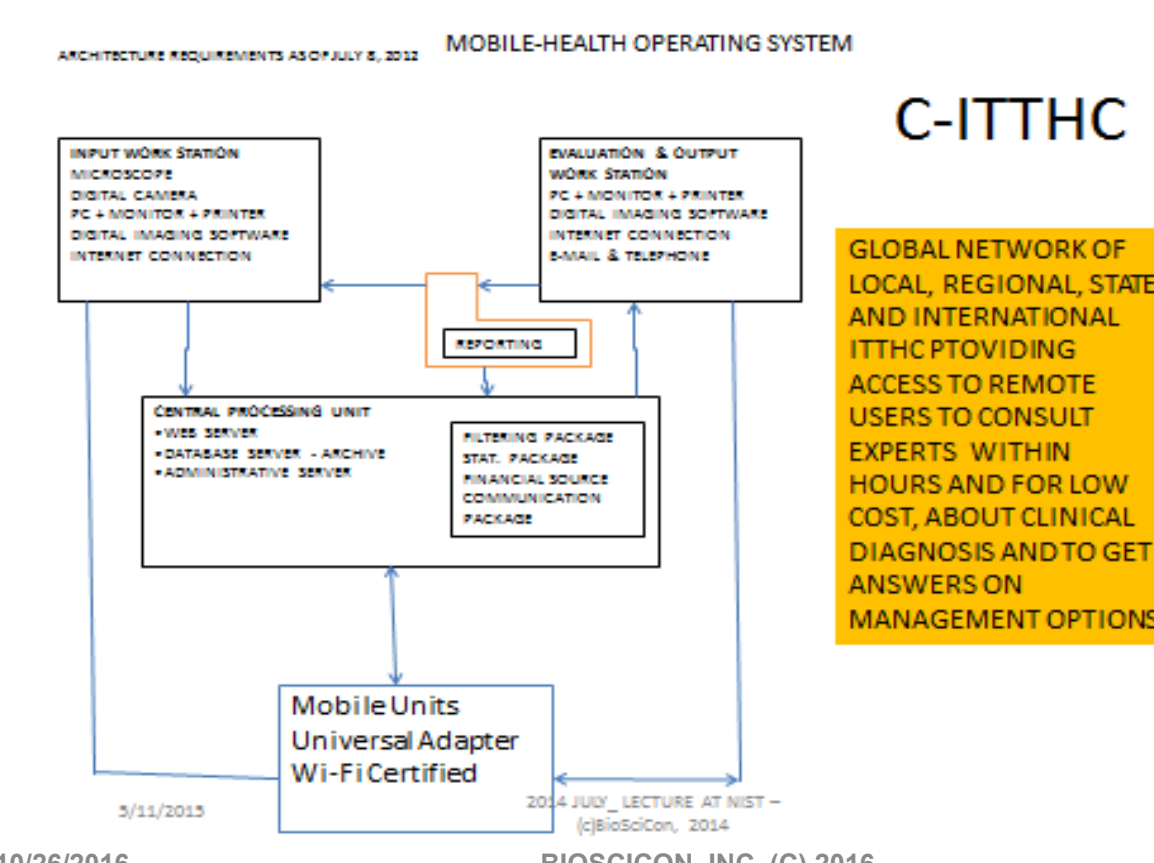


10/26/2016

BIOSCICON, INC. (C) 2016

18

HUBS FOR GLOBAL NETWORKING

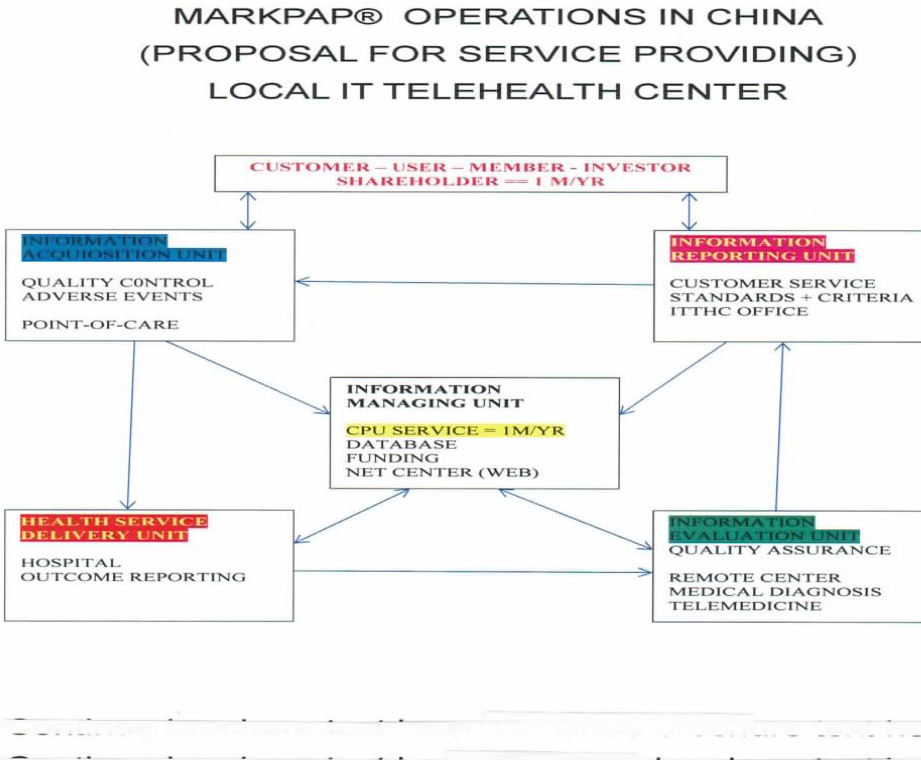


10/26/2016

BIOSCICON, INC. (C) 2016

19

FUTURE TELEMEDICINE IN CHINA



10/26/2016

BIOSCICON, INC. (C) 2016

20

PROSPECTIVE OF NEW MEDICINE



10/26/2016

BIOSCICON, INC. (C) 2016

21

SPONSOR OF THIS DEVELOPMENT



WWW.BIOSCICON.COM

10/26/2016

BIOSCICON, INC. (C) 2016

22